



# Flossie Bear

by Debbie Orr

When my children were a little younger, I used to knit them teddies from made-up patterns and whatever fluffy yarn they chose from the local craft shop.

Now I have the temptation of Lotus Yarns cashmere sitting in my workshop, I couldn't resist tinkering with this fairisle pattern, my favourite way of knitting, and Flossie was born.

Flossie is a hugging bear and hence is constructed with no arms or legs to get in the way of affectionate hugs.

## Needles

6mm - US size 10

## Yarn

Lotus Yarns Cashmere Soft

Supplier -skeinqueen.co.uk

Suitable for any DK weight yarn

Oatmeal (MC) plus 5 contrast colours (CC)

Ruby, Sugar Pink, Hot Pink, Chocolate and Lime.

## Body

Cast on 120 stitches in MC

Knit in the round using magic loop - knit every round.

Body, face and ears knitted in one piece.

Knit 2 rounds in MC then follow pattern chart to end of last coloured round (Ruby).

## Face

Knit 7 rounds in MC

Wind off two small balls of chocolate colour.

Round 8: K26 in MC, K3 chocolate, K3 MC, (separate ball) K3 chocolate, K to end of round in MC.

Continue making facial features following the chart and **at the same time**, follow the decreases on the chart and the decreasing directions as given.

### **Decreasing**

At the row where the eyes start, K2 tog twice, K52, (K2 tog) x 4, K52 to last 4 sts, K2 tog twice.

Round 2: Knit a round (maintaining pattern).

Round 3: K2 tog, K48, (K2 tog) x 2, K48 to last 4 sts, K2 tog.

Round 4: Knit

Round 5: K2 tog, K44, (K2 tog) x 2, K44, K2 tog.

Round 6: Knit

Round 7: K2 tog, K40, (K2 tog) x 2, K40, K2 tog.

Round 8: Knit

Round 9: Knit

80 sts

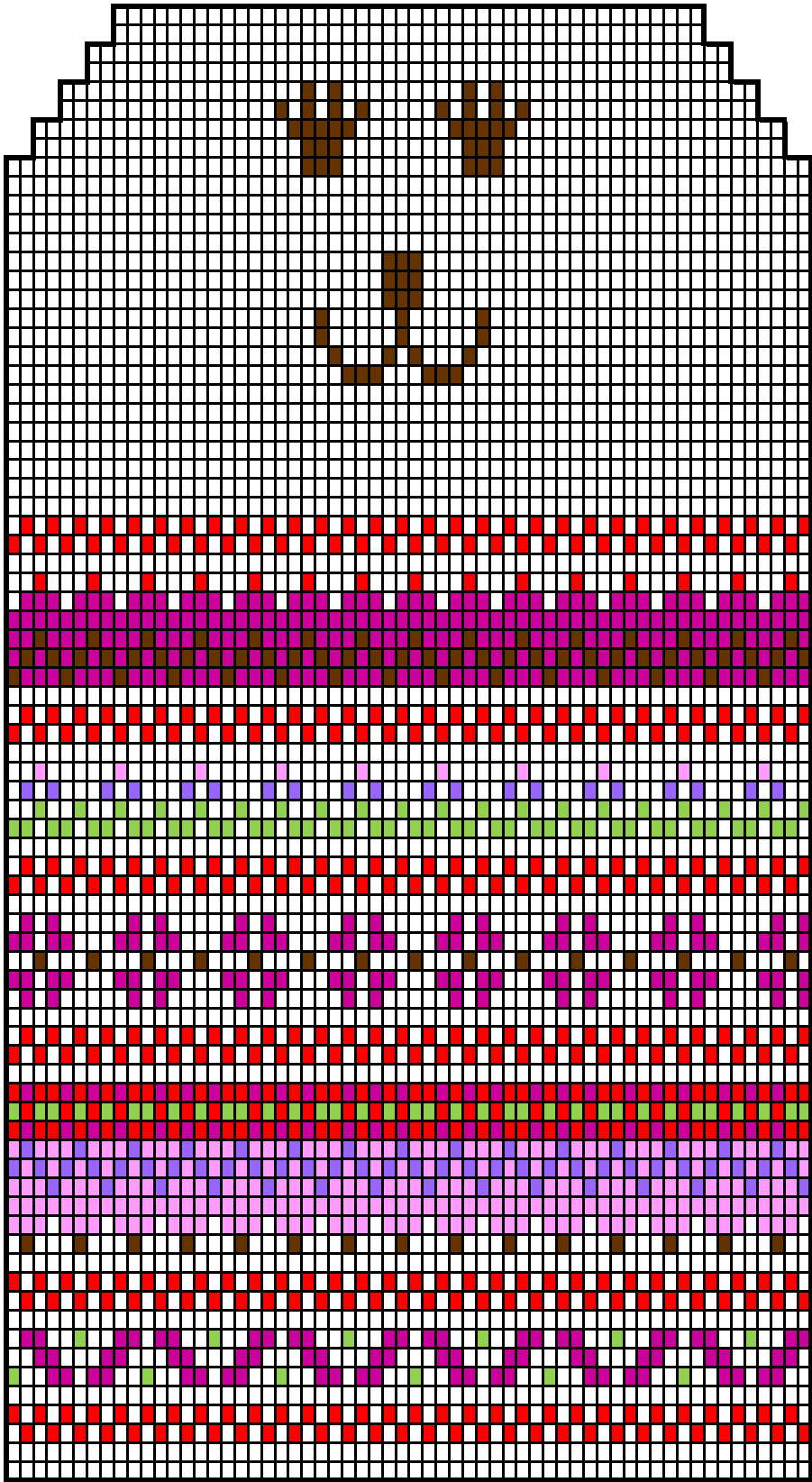
Cast off.

### **Finishing**

Sew up head seam. Stuff lightly. Sew up bottom seam. Do a running stitch in the corners to create ears.

Give to someone small to hug.





- mc - camel
- red
- hot pink
- lime
- chocolate
- sugar pink
- lilac